

# STAKKAbox™ for FTN

The STAKKAbox™ offers Network Rail network contractors the ability to quickly, safely and economically construct Fibre Joint Bays and other equivalent underground access chambers



In addition, the tried and tested design of the STAKKAbox™ means that when installed, the unit will provide years of service for Network Rail. The STAKKAbox™ is not affected by diesel, ground acids, alkalines or frost – all known killers of concrete. As a structural unit it will support loadings imparted from vehicles and passing trains.

Safety on site is maintained when installed as the longer cable lengths held in the chamber allow service work to be carried out on the joint well away from the track and access to the chamber can be made by one man when composite covers are installed.

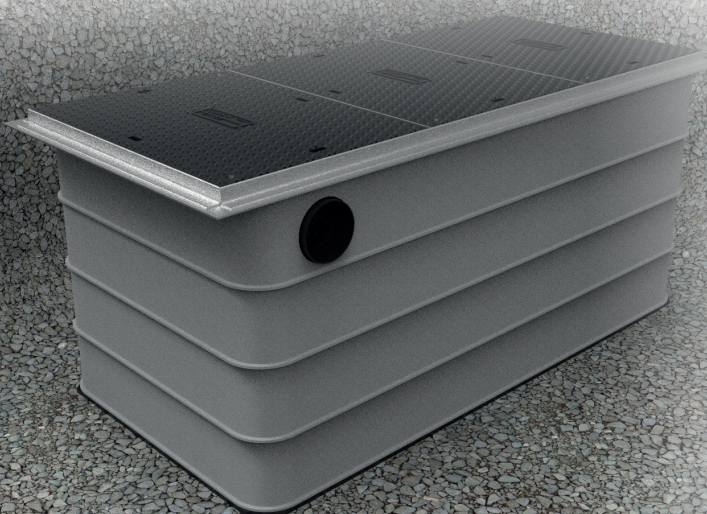
## At a glance

- Two man installation
- Compatible with existing trough
- Very strong – exceeds 15 tonnes vertical loading and has sidewall loadings comparable to concrete
- Arrives on site fully pre-kitted
- Rapid installation
- Secure
- Stores up to 450cm of cable
- Very safe to use when installed

Approved by:



Certificate #: PA05/635



Concrete	vs	STAKKAbox™
+ 200kgs	Total Weight	128kgs
5 Hours l	Installation Time	35 Minutes
8	Men to Lift (HSE Guide 25kgs/MAN)	2
5 Meters	Cable Length Capacity	450 Meters
No	Security Fitted as Standard	Yes
Yes	Special Plant Required On Site	No



## Cover & Frame

### Option 1

Composite EN124 B125 Double Locking Lids, 610mm X 610mm, Galvanised Steel Frame (Bolted To Chamber Top H)  
 Individual Cover Weight: 20kgs  
 Total Covers Weight: 58kgs

### Option 2

Concrete Infill EN124 B125 Double Locking Lids, 610mm X 610mm, Galvanised Steel Frame (Bolted To Chamber Top H)  
 Individual Cover Weight: 58kgs  
 Total Cover Weight: 129kgs

## Chamber

Section Depth: 150mm  
 Section Weight: 14kgs

Clear Opening

**A:** Length 1310mm

**B:** Width 610mm

Overall Size

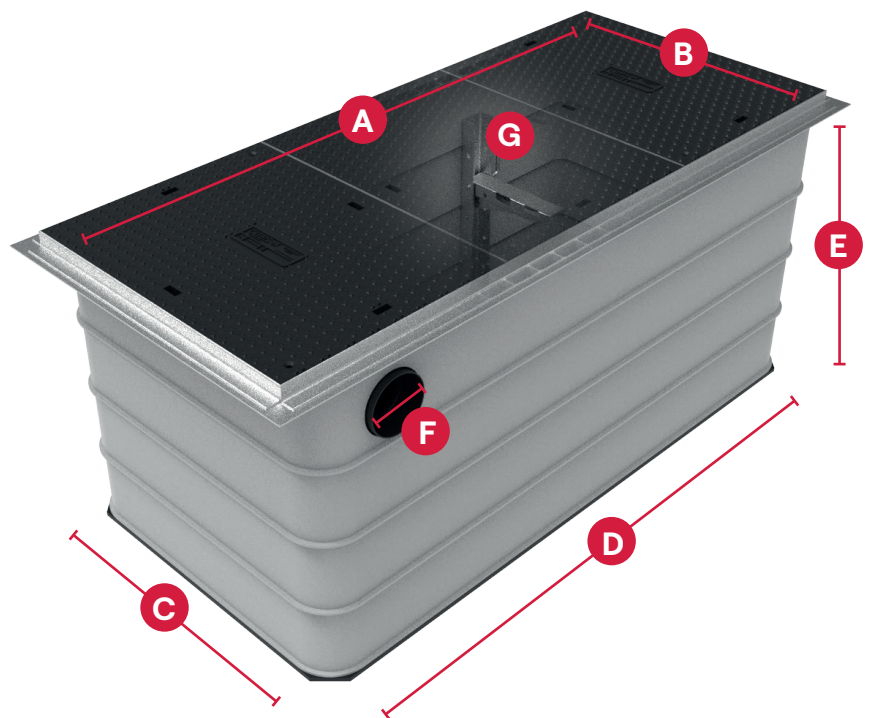
**C:** Length 1410mm

**D:** Width 710mm

**E:** Depth 600mm

600mm (Shown) Or 750mm

Base 11mm Thick And Complete With Drainage Hole, Weight: 12kgs



## Accessories

Chamber Entry Bellmouth

**F:** Internal Diameter 110mm

## Joint Bearer Brackets X 2

**G:** Wall Channel Length 508mm

Arm Length 263mm

Total Weight: 3.8kgs