

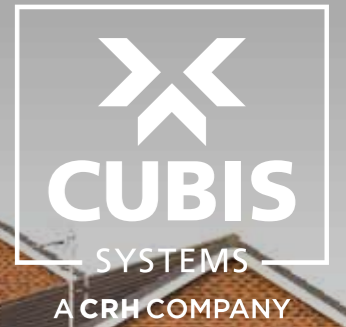
## Network Rail PADS Approved Products

Buried Cable Routes  
Under Track Crossings  
Fixed Telecom Networks  
Drainage Catch Pits  
Cable Troughing





# Introduction



## Rail Industry Experts

Cubis Systems is Europe's leading manufacturer of innovative, lightweight structural access chamber and cable protection systems used in the construction of rail infrastructure networks. Cubis work closely with some of the largest Rail network operators in Europe to provide integrated systems for telecoms, drainage, signalling and power applications.

Cubis' Network Rail PADS approved products offer clients the ideal solution for a wide range of rail and light rail applications. Cubis' composite range of products offer a strong, modular, lightweight and scalable system that can be built on-site, significantly reducing construction costs through time savings.

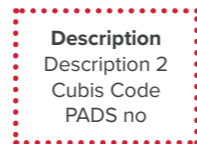
## Certification

Cubis Systems has Network Rail certification covering 4 product ranges. These are available on request.

- PA05/00635 Under Track Crossing and Buried Cable Routes
- PA05/02301 Fixed Telecom Networks
- PA05/04067 Drainage Catch Pits
- PA05/07006 Cable Troughing

## Product Codes

This document details the product information as illustrated:  
Box as in current brochure (Description 2 Cubis Code PADS no.)



## Contents

Introduction	02
Under Track Crossing (UTX)	04-05
Buried Cable and Linear Routes	06-07
Fixed Telecommunications Network (FTN)	08
Drainage Catch Pit	09
Cable Troughing	10
Additional Parts and Accessories	11



The Cubis approach to innovation in a 'traditional' industry has been to develop and manufacture products from multiple lightweight material types that incorporate intelligent technical design features, and integrate together to replace more traditional construction materials such as brick and concrete. These unique features provide clients with an adaptable PADS approved system to suit the needs of their installation.

Amongst other valued customers, Cubis also has long-standing approvals with SNCF (France) and Network Rail (UK). Cubis has Link-up approval for working directly with Network Rail. Supplier ID: 26055.



# Under Track Crossing (UTX)

Cert:  
PA05/00635



## Features & Benefits:

Installed in one day with rapid installation, reducing track possession time

Reduced installation costs

Lightweight and safe

High crush strength MULTIduct™ units

No spacers or graded backfill material required

B125 access cover options available: composite or concrete

Fully customisable, flexible and adjustable on-site

Future-proofed infrastructure

No additional tooling required with only hand adjustment required for backfill barrier adjustment

Cubis' under tracking crossing (UTX) system has been approved for use with Network Rail. The modern method of building an under track crossing allows for a faster, safer constructed system reducing track possession times. The UTX system seamlessly incorporates Cubis' STAKKAbOX™ access chambers with MULTIduct™ cable protection system.

The UTX system utilizes the modern alternative to traditional ducting MULTIduct™ an innovative, lightweight, structural, multiple duct system. The easy to handle 1m long 4, 6 or 9 way units are lightweight under 20kg and offer a unique 'one click' push fit connection that is fast and easy to install. Due to its high crush strength MULTIduct™ requires a shallower and narrower burial depth and does not require any concrete or specialist surround. Minimum cover for Network Rail UTXs of 0.6m is easily achievable. Excavated material can be reused during re-installation reducing time, cost, heavy plant and disposal of excess material.

See page 7 for more information on the available MULTIduct™ options.



## Access Chamber system

Complete systems with MULTIduct™ spigots for easy connection

Chamber Type	Clear Opening (mm)	Depth (mm)	MULTIduct™	Cover Type (B125 loading)	Base	CUBIS Code	PADS no
ULTIMA	1310 x 610	600	4-Way	Concrete	Standard Base	SYULD4-13100610-IR04TBA0C	087/004536
ULTIMA	1310 x 610	600	6-Way	Concrete	Standard Base	SYULD6-13100610-IR04TBA0C	087/004537
ULTIMA	1310 x 610	600	9-Way	Concrete	Standard Base	SYULD9-13100610-IR04TBA0C	087/004538
ULTIMA	1310 x 610	600	4-Way (XL)	Concrete	Standard Base	SYULDx-13100610-IR04TBA0C	087/004539
ULTIMA	1310 x 610	600	4-Way	Composite	Standard Base	SYULD4-13100610-CR04LBE8C	087/004532
ULTIMA	1310 x 610	600	6-Way	Composite	Standard Base	SYULD6-13100610-CR04LBE8C	087/004533
ULTIMA	1310 x 610	600	9-Way	Composite	Standard Base	SYULD9-13100610-CR04LBE8C	087/004534
ULTIMA	1310 x 610	600	4-Way (XL)	Composite	Standard Base	SYULDx-13100610-CR04LBE8C	087/004535

## MONObox™ POLYVAULTS



**POLYVAULT Chamber ONLY**  
915mm x 915mm

REQUEST PRODUCT CODE  
PADS no: 087/005178

**B125 Concrete-Infill Cover ONLY**  
Galvanised Steel Frame

FCCIMP-09150915-00R0TB002  
PADS no: 087/005179

**Base Plate ONLY**

**Black ABS**  
CPPV36-09150915-36000000C  
PADS no: 087/005180

**Base Plate ONLY**

**Heavy Duty black HDPE**  
CPPV36-09150915-36000000E  
PADS no: 087/005181

**Complete chambers, supplied with:**

- Concrete Infill frame and cover (B125)
- ABS Base Plate
- Step Irons

**Complete POLYvault Chamber**

**1220mm x 1220mm**  
REQUEST PRODUCT CODE  
PADS no: 087/005180

**Complete POLYvault Chamber**

**1530mm x 1220mm**  
REQUEST PRODUCT CODE  
PADS no: 087/005181

Chamber sizes are reflective of the clear opening of the inside of the chamber  
Other clear opening sizes are available  
Please Contact Us for more information

Different Depths  
POLYvault chambers can be manufactured and are approved in the following depths:

- 470mm
- 560mm
- 660mm
- 760mm
- 910mm
- 1015mm
- 1120mm
- 1220mm
- 1320mm
- 1420mm
- 1525mm
- 1625mm
- 1728mm
- 1830mm
- 1930mm
- 2032mm
- 2134mm
- 2235mm
- 2340mm
- 2440mm



# Buried Cable and Linear Routes

Cert:  
PA05/00635



## Features & Benefits:

Rapid installation, reducing track possession time

Reduced installation costs

100m duct runs

Lightweight and safe

Easier to pull cables through than traditional ducting systems

Enhanced security

Seamless integration with STAKKAbOX™ access chamber system

High crush strength MULTIduct™ units

No spacers or graded backfill material required

Fully customisable, flexible and adjustable on-site

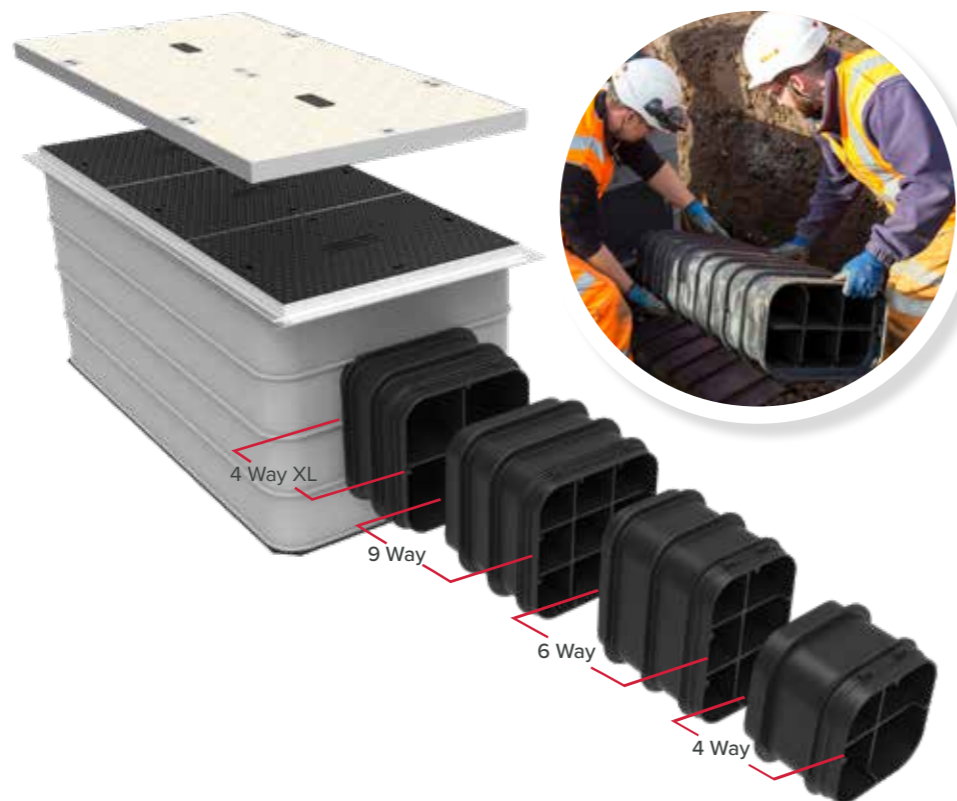
Compatible with existing ducting and troughing networks

Future-proofed infrastructure

Cubis' Network Rail PADS approved buried cable route system has been designed and developed to offer a modern alternative to traditional methods for burying trackside cabling offering enhanced security to telecommunications, power and signalling networks. Providing a seamless integration between Cubis' STAKKAbOX™ chamber access and MULTIduct™ cable protection products, the buried cable route system delivers reduced track possession times through easier and safer installation, assembly of system and improved build quality.

The buried cable route system utilises Cubis modern alternative to traditional ducting MULTIduct™ an innovative, lightweight, structural, multiple duct system. The easy to handle 1m long 4, 6 or 9 way units are lightweight under 20kg and offer a unique 'one click' push fit connection that is fast and easy to install. MULTIduct™ has an extensive range of flexible accessories that enables the system to deal with tight turns, elevations and other obstacles.

MULTIduct™ provides 2° of flexibility within its connection, resulting in the creation of a natural bend that can follow the curvature of a track. Due to its high crush strength MULTIduct™ requires a shallower and narrower burial depth and does not require any concrete or specialist surround. Minimum cover for Network Rail of 0.6m is easily achievable. Excavated material can be reused during re-installation reducing time, cost, heavy plant and disposal of excess material.



## MULTIduct™

Unit

	4-Way MULTIduct™	6-Way MULTIduct™	9-Way MULTIduct™	4-Way XL (160mm) MULTIduct™
	DUMDD4-00004WAY-BK0000000 PADS no: 087/002803	DUMDD6-00006WAY-BK0000000 PADS no: 087/002804	DUMDD9-00009WAY-BK0000000 PADS no: 087/002805	DUMDX4-00XL4WAY-BK0000000 PADS no: 087/004540

Single Duct Adapters

	DUMDD4-00004WAY-GRDA0000000 PADS no: 087/004520	DUMDD6-00006WAY-GRDA0000000 PADS no: 087/004522	DUMDD9-00009WAY-GRDA0000000 PADS no: 087/004524	DUMDX4-00XL4WAY-GRDA0000000 PADS no: 087/004526
--	--	--	--	--

Double Spigots

	DUMDD4-00004WAY-BK0000SPD PADS no: 087/004528	DUMDD6-00006WAY-BK0000SPD PADS no: 087/005175	DUMDD9-00009WAY-BK0000SPD PADS no: 087/004530	DUMDX4-00XL4WAY-BK0000SPD PADS no: 087/005297
--	--	--	--	--

Double Sockets

	DUMDX4-00XL4WAY-BK0000SOD PADS no: 087/004527	DUMDD6-00006WAY-BK0000SOD PADS no: 087/005174	DUMDD9-00009WAY-BK0000SOD PADS no: 087/004529	DUMDX4-00XL4WAY-BK0000SOD PADS no: 087/005296
--	--	--	--	--

End Caps Spigots

	DUMDD4-00004WAY-BK0000S'E PADS no: 087/005301	DUMDD6-00006WAY-BK0000S'E PADS no: 087/005303	DUMDD9-00009WAY-BK0000S'E PADS no: 087/005305	DUMDD4-XLP04WAY-BK0000S'E PADS no: 087/005299
--	--	--	--	--

End Caps Sockets

	DUMDD4-00004WAY-BK0000SO* PADS no: 087/005300	DUMDD6-00006WAY-BK0000SO* PADS no: 087/005302	DUMDD9-00009WAY-BK0000SO* PADS no: 087/005304	DUMDD4-XLP04WAY-BK0000SO* PADS no: 087/005298
--	--	--	--	--

Bend Units

	22.5° 4-way	45° 4-way	22.5° 6-way flat	45° 6-way flat	45° 6-way tall	22.5° 9-way	45° 9-way
	PADS no: 087/004512	DUMDD6-100022.5-BKMM**000 PADS no: 087/004513	DUMDD6-100022.5-BKMM**000 PADS no: 087/004514	DUMDD6-1000045-BKMM**000 PADS no: 087/004515	DUMDD6-1000045-BKMM**000 PADS no: 087/004516	DUMDD9-100022.5-BKMM**000 PADS no: 087/004517	DUMDD9-1000045-BKMM**000 PADS no: -

Y' Lateral

	22.5° Y' Lateral for 160mm flexible duct	45° Y' Lateral for 160mm flexible duct	22.5° Y' Lateral for 110mm flexible duct	45° Y' Lateral for 110mm flexible duct
	AC0000-22.5PIPE-010000000 PADS no: 087/004508	AC0000-0045PIPE-010000000 PADS no: 087/004509	AC0000-22.5PIPE-020000000 PADS no: 087/004510	AC0000-0045PIPE-020000000 PADS no: 087/004511

Spring Clips - STEEL CLIP ONLY (600 per box)

	ACDM00-00000000-00DC00000 PADS no: 087/005176
--	--

Rubber Gasket (100 / 75 per box)

	ACDM06-00006WAY-00DG00000 PADS no: 087/005177
--	--

For more information on MULTIduct™, please request our cable protection guide.

# Fixed Telecommunications Network (FTN)

# Drainage Catch Pit (FLEXI Pit)

Cubis' Network Rail PADS approved trackside FTN system has been designed and developed to offer a modern alternative to traditional methods for storage of trackside cabling, offering enhanced security to power, telecommunications and signalling cables. Providing a seamless integration between Cubis' STAKKAbox™ chamber access and MULTIduct™ cable protection products, the FTN system delivers reduced track possession times through easier and safer installation, assembly of system and improved build quality.

The FTN system utilizes the STAKKAbox™ ULTIMA access chambers. A lightweight modular scalable solution that can be built and adjusted on-site. The STAKKAbox™ system significantly reduces costs through reduced construction times, whilst providing a structural unit that will support loadings imparted from vehicles and passing trains.

The STAKKAbox™ ULTIMA system is made from a GRP material that is not affected by diesel, ground acids, alkalines or frost unlike traditional access chamber systems such as brick and concrete. Cubis' FTN system provides storage of up to 450m of cabling allowing clients easy and safe access.

## Complete Chambers

Cert:  
PA05/02301

Also available  
**Bellmouth 110**  
ACBMMP-0110  
PADS no: 054/160759



**Access chamber with B125 concrete cover**  
1310mm x 610mm x 662mm  
SYUL06-13100610-IR04TBA0C  
PADS no: 054/160755



**Access chamber with 12.5T composite cover**  
1310mm x 610mm x 656mm  
SYUL06-13100610-CR04LBE8C  
PADS no: 054/160757

## Features & Benefits:

Installed in one day with rapid installation, reducing track possession time

Reduced installation costs

Lightweight and safe

Pre-fitted accessories option available

B125 access cover options available: composite or concrete

Fully customisable, flexible and adjustable on-site

Compatible with existing ducting and troughing networks

Stores up to 450m of cable

Future-proofed infrastructure

Cubis' Network Rail PADS approved track-side drainage inspection chamber system FLEXI Pit has been designed and developed to offer a modern alternative to traditional methods with an adaptable pipe invert level.

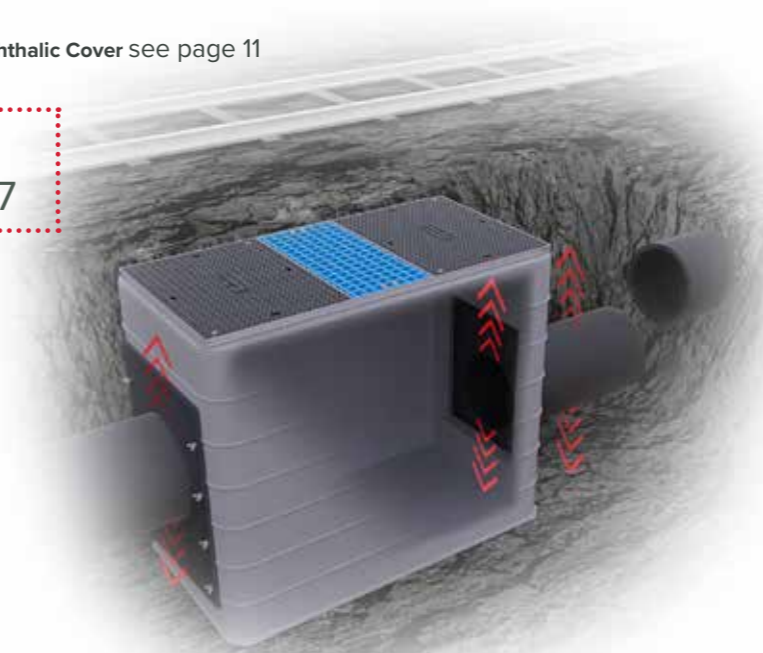
The system incorporates a unique sliding backfill barrier that is easily adjusted on-site during installation. The backfill barrier allows for up to 150mm vertical adjustment to achieve the correct pipe invert level required and can accommodate pipes from 150mm to 450mm (internal dimension). This unique system removes the need for individual detailed technical drawings, with the added benefit of being the only system to offer chamber height alteration by adding 150mm STAKKAbox™ ULTIMA ring sections until the desired depth is achieved. This allows for quicker install reducing track possession times.

## Complete Chambers

Product	Description - Varying Depths	PADS no.
FLEXI Pit	1160 x 380mm	057/100698
FLEXI Pit	1200 x 600mm	057/100699
FLEXI Pit	1200 x 675mm	057/101492
FLEXI Pit	1200 x 750mm	057/101497
FLEXI Pit	1200 x 1000mm	057/101507
FLEXI Pit	1310 x 850mm	057/100660
FLEXI Pit	1350 x 900mm	057/101502
FLEXI Pit	1350 x 1350mm	057/101512

Also available full **Isophthalic Cover** see page 11

Cert:  
PA05/04067



Pipe dimensions can be specified at point of order

## Features & Benefits:

Rapid installation & reduced track possession time

Reduced installation costs

Lightweight and safe

Fully customisable, flexible and adjustable on-site

Compatible with existing drainage networks

Compatible with both smooth and twin wall pipes (150mm, 225mm, 300mm and 375mm)

Access cover options available: Full and part composite covers or full isophthalic grate cover for ease of inspection

No additional tooling required with only hand adjustment required for backfill barrier adjustment



# Cable Troughing (PROtrough)

# Accessories

## Features & Benefits:

Rapid installation, reducing track possession time

Reduced installation costs

Lightweight (X5 lighter than concrete)

Range of accessories options available

5 Way Junction Box for inlet and outlet cable routes

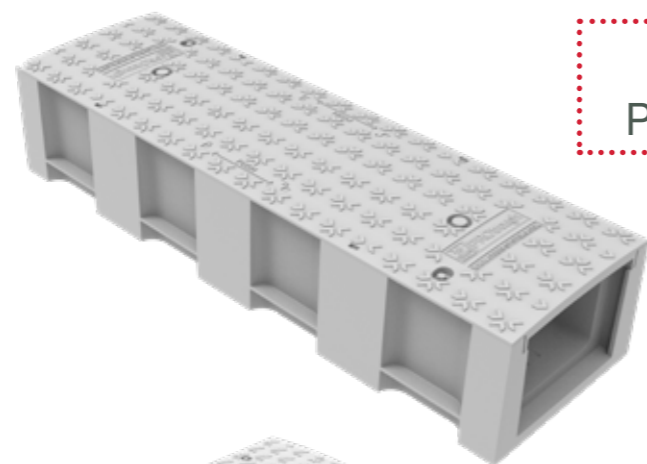
Unique one click interlocking cover and sliding mechanism

Compatible with existing ducting and troughing networks

Complies with European fire-retardant specifications

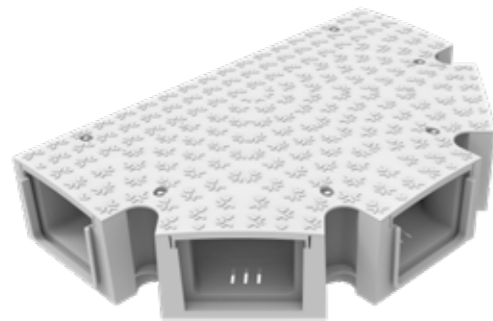
Future-proofed infrastructure

Cubis' Network Rail approved PROtrough system has been developed to accommodate for the modern needs of railway infrastructure. Approved for full use within electrical substation compounds, the cable protection product offers an advanced and innovative design, in comparison to other lightweight thermoplastic troughing systems. PROtrough is made from a thermoset material and therefore is capable of complying with all major rail fire retardancy specifications for tunnels and stations. PROtrough works in conjunction with Cubis' access chamber products such as STAKKAbox™. Seamless integration with multiple products allows clients to experience easy cable management and network access.



Cert:  
PA05/07006

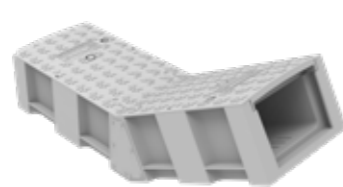
**PROtrough C/1/9 Trough Body & Lid**  
PADS no: 0091/011730  
PADS no: 0091/011731



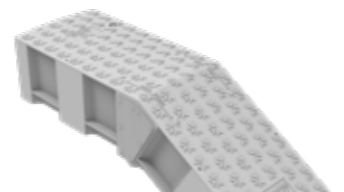
**PROtrough C/1/9 5 Way Junction & Lid**  
PADS no: 0091/011737  
PADS no: 0091/011738



**PROtrough C/1/9 Degree Bend & Lid**  
PADS no: 0091/011735  
PADS no: 0091/011736



**PROtrough C/1/9 30 Degree UP Riser**  
PADS no: 0091/011745



**PROtrough C/1/9 30 Degree DOWN Riser**  
PADS no: 0091/011746



**PROtrough C/1/9 200mm Adaptor & Lid**  
PADS no: 0091/011733  
PADS no: 0091/011734

## Chamber Ring Sections

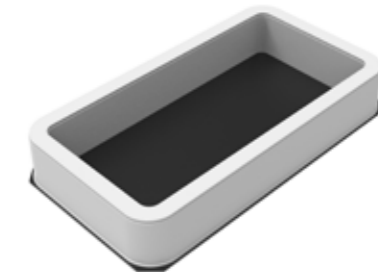
Cubis' range of accessories has been designed to improve and enhance the existing systems, reduce build time and ensure safety with each accessory unique to the specific network operators requirements. Accessories include, duct entries, chamber ring sections for increased chamber depth a range of access covers depending on installation and access cover lifting keys.



**STAKKAbox™ ULTIMA Section**

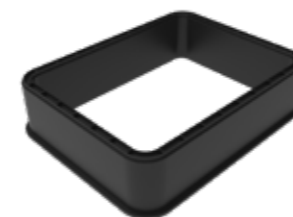
1200mm x 600mm x 150mm  
PADS no: 057/100696  
1160mm x 380mm x 150mm  
PADS no: 057/100695  
1200mm x 675mm x 150mm  
PADS no: 057/101493  
1200mm x 750mm x 150mm  
PADS no: 057/101498  
1200mm x 1000mm x 150mm  
PADS no: 057/101508

1200mm x 1200mm x 150mm  
PADS no: 087/005205  
1310mm x 610mm x 150mm  
PADS no: 054/160756  
1310mm x 850mm x 150mm  
PADS no: 057/100665  
1350mm x 900mm x 150mm  
PADS no: 057/101503  
1350mm x 1350mm x 150mm  
PADS no: 057/101513



**STAKKAbox™ ULTIMA Base**

1310mm x 610mm x 160mm  
PADS no: 054/160758  
1160mm x 380mm x 160mm  
PADS no: 057/100692  
1200mm x 600mm x 160mm  
PADS no: 057/00691  
1200mm x 675mm x 150mm  
PADS no: 057/101517  
1200mm x 750mm x 150mm  
PADS no: 057/101518  
1200mm x 1000mm x 150mm  
PADS no: 057/101519  
1310mm x 850mm x 160mm  
PADS no: 057/100657  
1350mm x 900mm x 150mm  
PADS no: 057/1015120  
1350mm x 1350mm x 150mm  
PADS no: 057/1015121



**STAKKAbox™ Modula Section**

600mm x 600mm x 150mm  
900mm x 900mm x 150mm



**STAKKAbox™ Modula Base**

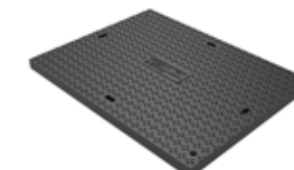
600mm x 600mm x 150mm  
900mm x 900mm x 150mm

## Access Covers



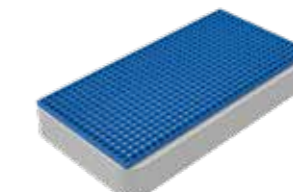
**Concrete-Infill Cover**  
610mm x 610mm  
COCI05-00000000-00000B001  
PADS no: 054/160760

**Galvanised Steel Frame to Suit**  
1310mm x 610mm x 52mm  
REQUEST PRODUCT CODE



**Composite Cover**  
600mm x 450mm  
COCOMP-06000450-00000BE81  
PADS no: 054/160761

**Galvanised Steel Frame to Suit**  
1310mm x 610mm x 30mm  
FOFS06-13100610-CSR70B002



**Riser and GRP grating**  
1160mm x 380mm x 150mm  
PADS no: 057/100694

1200mm x 600mm x 160mm  
PADS no: 057/00691

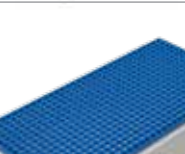
## Lifting Keys



**Concrete-Infill Cover Lifting Key**  
ACLKT2-00000000-000000000



**Composite Cover Lifting Key**  
ACLKSK-00150000-000000000



**Concrete-Infill Locking Key**  
ACLKTK-00000000-000000000

## Contact us:

Head Office:  
4 Silverwood Industrial Estate,  
Lurgan, Co. Armagh,  
BT66 6LN,  
Northern Ireland

Telephone: +44 (0)28 38 313 100  
Email: [info@cubis-systems.com](mailto:info@cubis-systems.com)

[www.cubis-systems.com](http://www.cubis-systems.com)



## Driven by Innovation

Cubis is Europe's leading manufacturer of network access chamber and ducting systems, used in the construction of infrastructure networks for rail, telecoms, water, construction and power markets.

Cubis has developed an innovative approach in an old-fashioned industry. This has been achieved by developing quality products which replace traditional construction materials, like bricks and concrete, with lightweight plastics incorporating intelligent design features. These can then be installed faster and ultimately save our customers both time and money.

Cubis manufactures preformed network access chamber systems STAKKAbox™, AX-S™ access covers, cable protection, MULTIduct™ and PROtrough cable trough at its manufacturing sites throughout the UK and Ireland these products are exported to more than 25 countries throughout the World.

At Cubis we pride ourselves on delivering technical customer support, new innovation, product quality and the highest levels of customer satisfaction.

## Ordering Information

For pricing, order codes and any other information, contact the UK Sales Office.

Telephone: +44 (0)28 38313 100  
Email: [sales@cubis-systems.com](mailto:sales@cubis-systems.com)