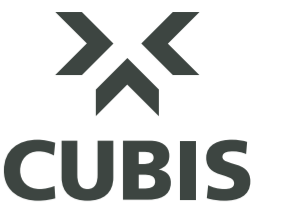


# Product Size Guide:



Dimensions in mm		AX-S™ Covers							STAKKAbox™ Chambers					
		A15 Composite	B125 Composite	B125 Concrete	A15 Recessed	B125 Recessed	C250 Composite	D400 Hinged	D400 Drop in	ULTIMA Standard	ULTIMA Connect	Modula*	Fortress	Quad
L	W													
150	150													
225	225													
300	300	■	■	■	■	■								
380	230			■	■									
420	240			■										
450	300	■	■	■	■	■								
450	450	■	■	■	■	■	■							
500	500	■	■	■	■	■								
530	380		■	■	■									
550	315			■	■									
600	450	■	■	■	■	■								
600	600	■	■	■	■	■	■	■						
675	675			■	■									
725	255			■	■									■
730	460			■	■									
750	600		■	■	■	■								
750	675			■	■									
750	750		■	■	■	■								
800	800	■	■	■	■	■								
885	530		■											
900	450	■	■	■	■	■								
900	600	■	■	■	■	■	■	■						
900	675			■	■									
900	900	■	■	■	■	■								
915	445		■	■	■									■
915	915		■	■	■	■								
960	610			■	■									
1000	600													
1000	1000	■	■	■		■								
1160	380		■	■		■								
1200	600	■	■	■	■	■								
1200	675													
1220	675													
1200	900		■	■	■	■								
1200	1200	■	■	■	■	■								
1220	1220		■	■	■	■								
1310	610		■	■	■	■	■	■						■
1300	850			■	■									
1380	530		■											
1500	750		■	■	■	■	■	■						
1500	1500		■	■	■	■								
1690	710				■									
1705	710			■										
1790	880	■	■			■								
1870	530													
1900	1200	■	■			■								
2000	600	■	■			■								
2285	710				■									
2320	740			■										
2500	1200	■	■			■								

\*Commonly supplied STAKKAbox™ Modula sizes, due to component format of the chamber other sizes are available.

## STAKKAbox™ Chambers

### Standard (ULTIMA)

STAKKAbox™ ULTIMA offers a flexible access chamber system with no compromise on strength. Due to the design and the material used (GRP), ULTIMA should be used anywhere where sidewall loading is a concern, such as alongside highways or railway tracks.



### Connect (ULTIMA)

ULTIMA Connect has been developed to offer greater flexibility in chamber sizes without compromising the strength of the standard ULTIMA system. Featuring the same twinwall, sectional design as the standard system sections however are built from combining multiple parts. As with ULTIMA, all parts are manufactured in GRP and sold as ring sections. All flat-pack requests



### Modula

STAKKAbox™ Modula is a range of modular and structural preformed access chambers. The system provides contractors with a means of constructing access chambers quickly and inexpensively, whilst offering improved build quality, reduced defects and enhanced site safety performance.



### Fortress

STAKKAbox™ Fortress is a range of modular and structural preformed access chambers. The Fortress system is moulded in HDPE and possesses excellent strength to weight properties. Each section is ribbed internally to improve loading performance.



### Quad

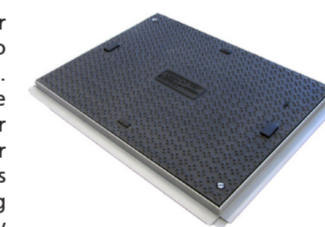
STAKKAbox™ Quadbox is a range of modular and structural preformed access chambers, supplied by Cubis. Available in the 102, 104 and 106 sizes, Quadbox is the only modular access chamber approved for use on BT Openreach networks.



## AX-S™ Covers

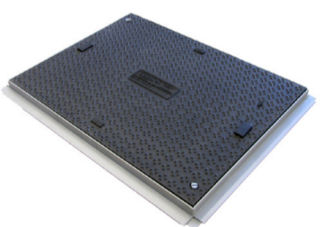
### Composite (A15 - B125 - C250)

AX-S™ Composite covers offer a lightweight cover with no reduction in loading performance. A wide range of sizes can be manufactured utilising multi-cover frames and there are options for bespoke customer badging. Covers can also be fitted with locking features to enhance the security of the assets below.



### Composite (C250)

AX-S™ Composite covers offer a lightweight cover with no reduction in loading performance. A wide range of sizes can be manufactured utilising multi-cover frames and there are options for bespoke customer badging. Covers can also be fitted with locking features to enhance the security of the assets below.



### Concrete (B125)

AX-S™ Concrete Infill covers offer flexibility in size and design. A wide range of sizes can be manufactured utilising multi-cover frames and there are options for bespoke customer badging. Covers can also be fitted with locking features to enhance the security of the assets below.



### Recessed (A15 - B125)

The AX-S™ Recessed cover range has developed a reputation in the construction industry for being high-quality, safe to use, value for money and secure when installed. AX-S™ Recessed covers are the sole approved footway cover used by end users such as BT Openreach and Virgin Media.



### Hinged (D400)

The Hinge Lock range of D400 ductile iron access covers fully comply with BS EN 124:1994 and carry the British Standard kitemark.



### Drop in (D400)

Drop in D400 ductile iron access covers fully comply with BS EN 124:1994 and carry the British Standard kitemark.

